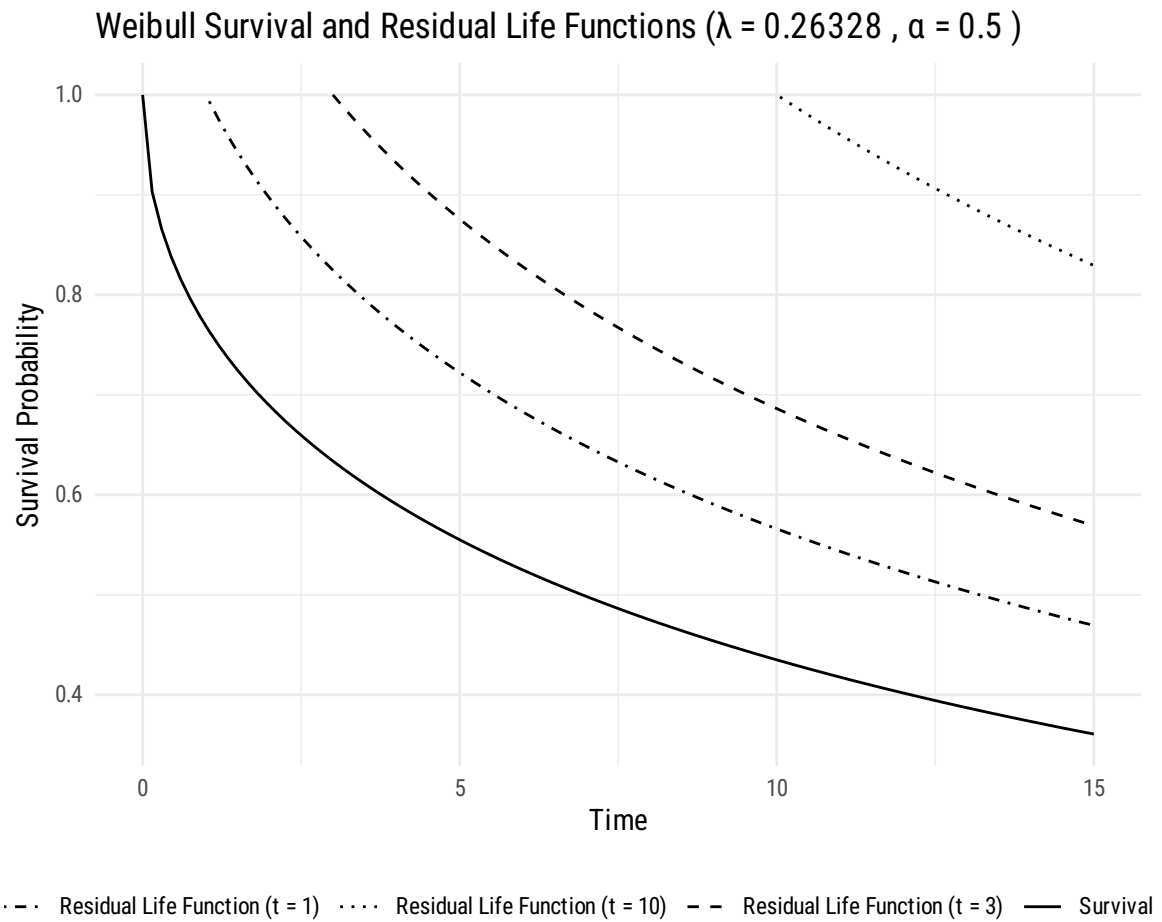


STA 5364, Report 1

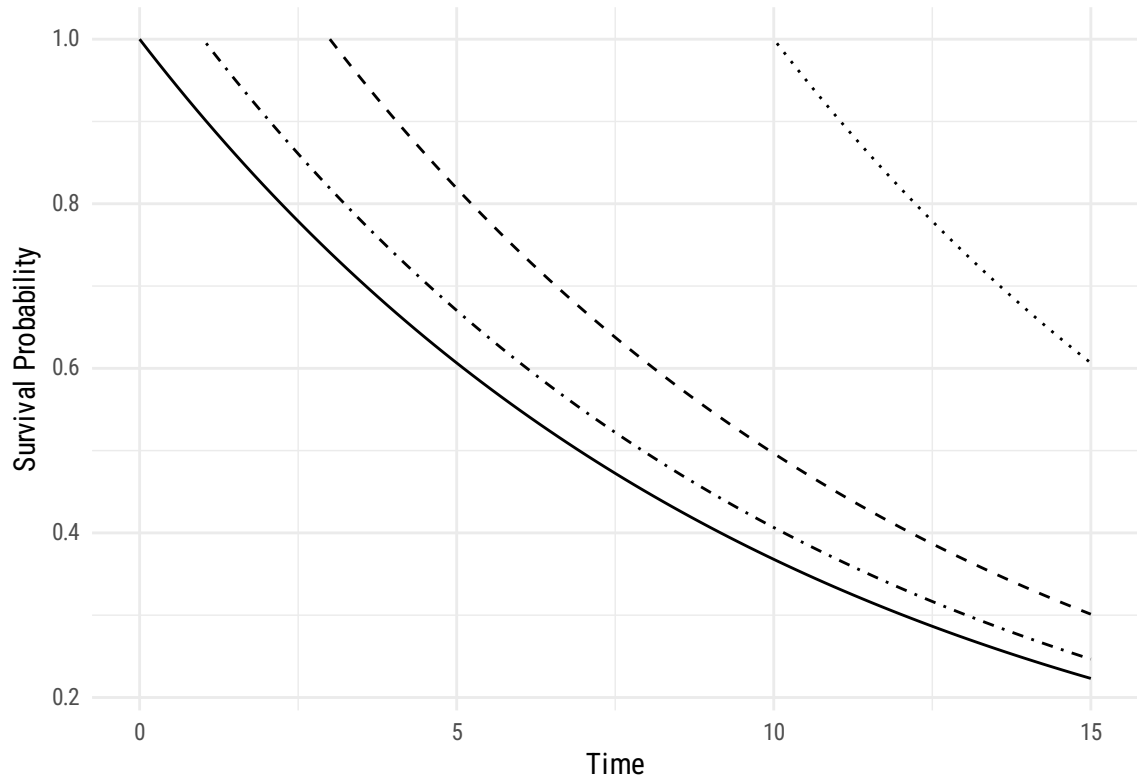
Carson Slater *Baylor University*

Report 1.4

1.4.1

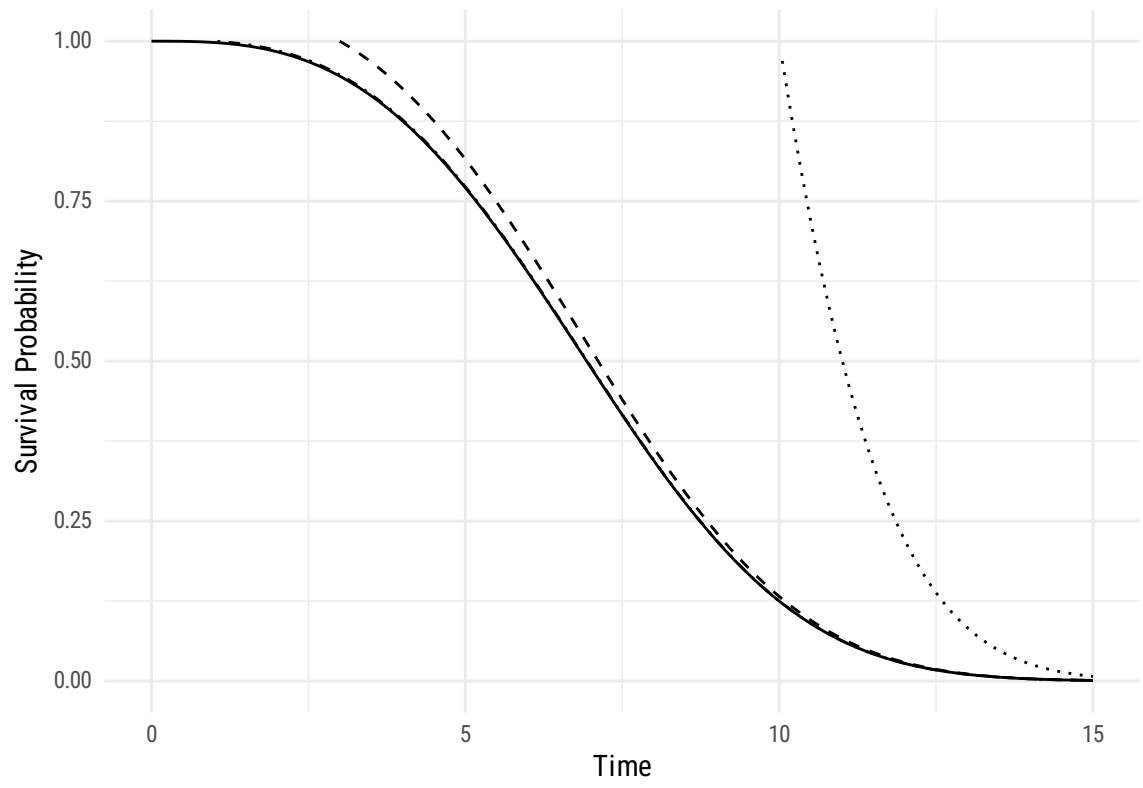


Weibull Survival and Residual Life Functions ($\lambda = 0.1$, $\alpha = 1$)



--- Residual Life Function (t = 1) Residual Life Function (t = 10) - - - Residual Life Function (t = 3) — Survival

Weibull Survival and Residual Life Functions ($\lambda = 0.00208$, $\alpha = 3$)

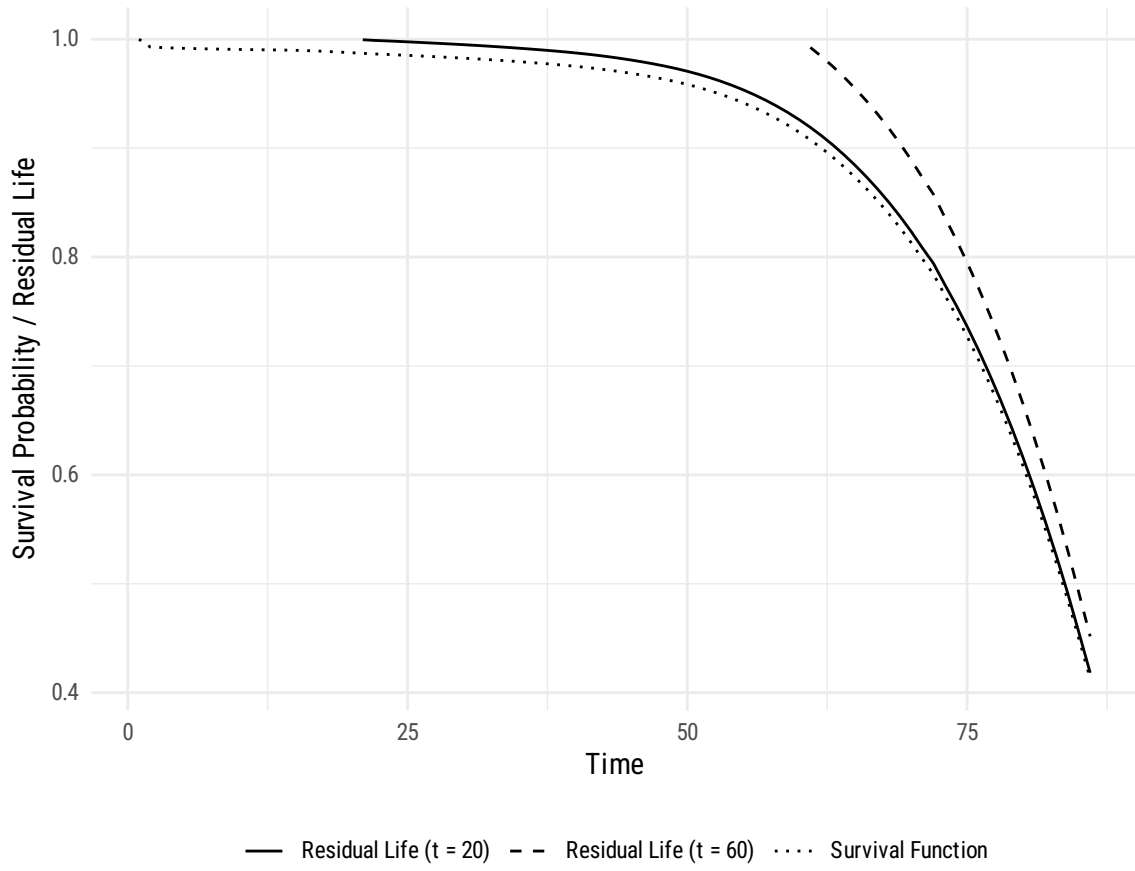


· · · Residual Life Function (t = 1) · · · · Residual Life Function (t = 10) - - Residual Life Function (t = 3) — Survival

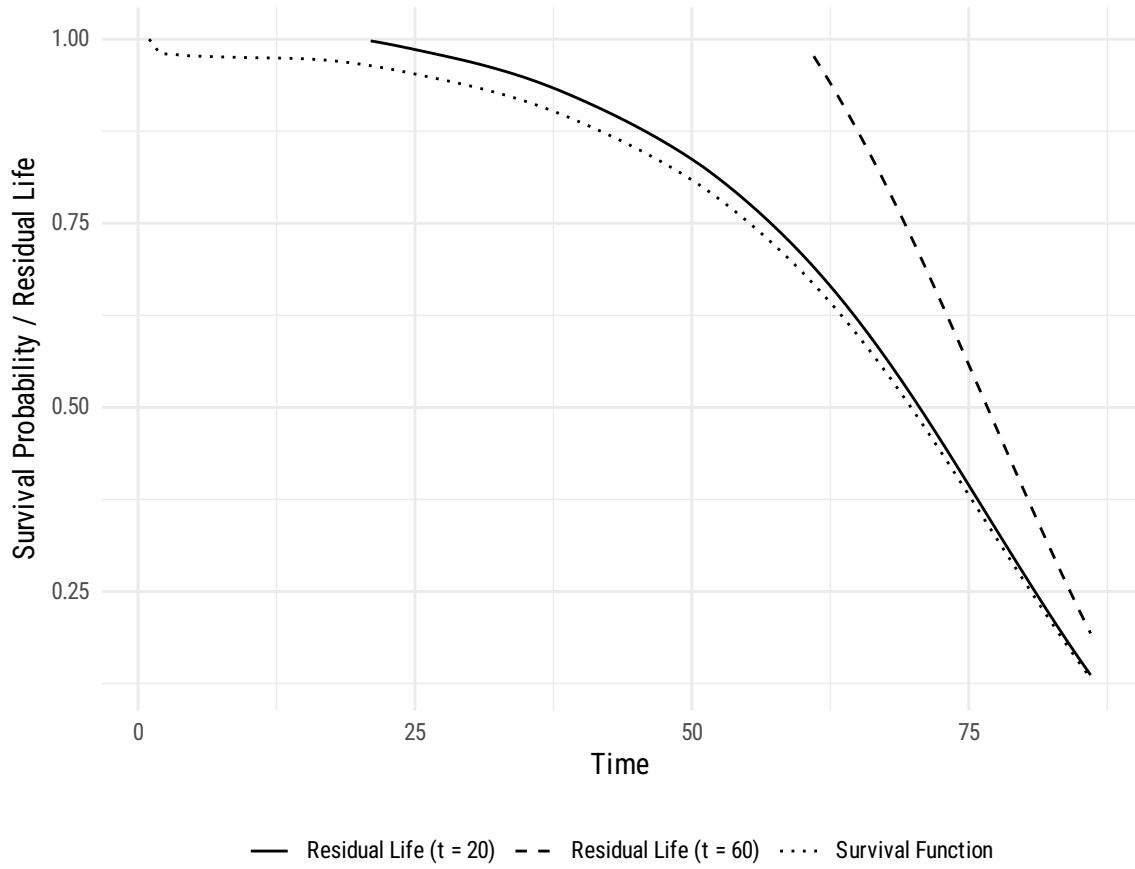
1.4.2



Survival and Residual Life Functions: White Women



Survival and Residual Life Functions: Black Men



Survival and Residual Life Functions: Black Women

